

Finishes as required

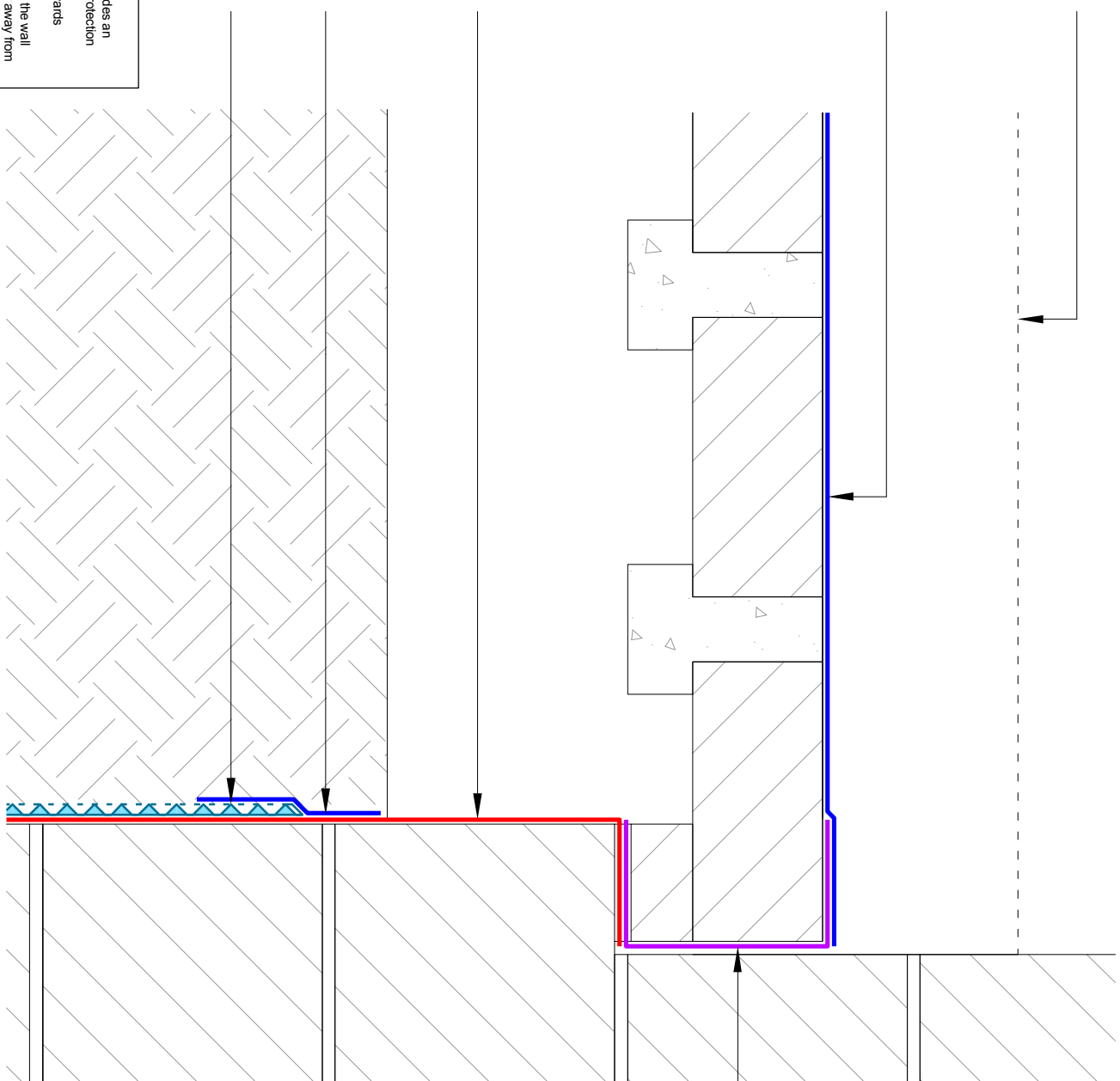
RIW Sheetseal 226:
lapping over DPC at
retaining wall junction

RIW Sheetseal 9000 DPC
wrapped around ends of
beam and block floor units

RIW Flexiseal Pro

RIW Sheetseal 226:
150mm wide band

RIW Double Drain:
see notes



- Notes:
1. Double Drain relieves hydrostatic pressure build up, and provides an additional factor of safety. However, if site conditions allow, Protection Board may be used instead.
 2. Double Drain is to be installed with the filter-fleece facing outwards towards the soil/ground.
 3. A maintainable sub-soil drain must be provided at the base of the wall and sub-soil drainage should be capable of discharging water away from the structure.

**SUSPENDED FLOOR;
DETAIL AT TOP OF INTERNAL RETAINING WALL**



DRAWING NO.: TD-204A	SCALE: NTS
DATE: 17/03/2016	CHECKED BY: DK
DRAWN BY: RA	