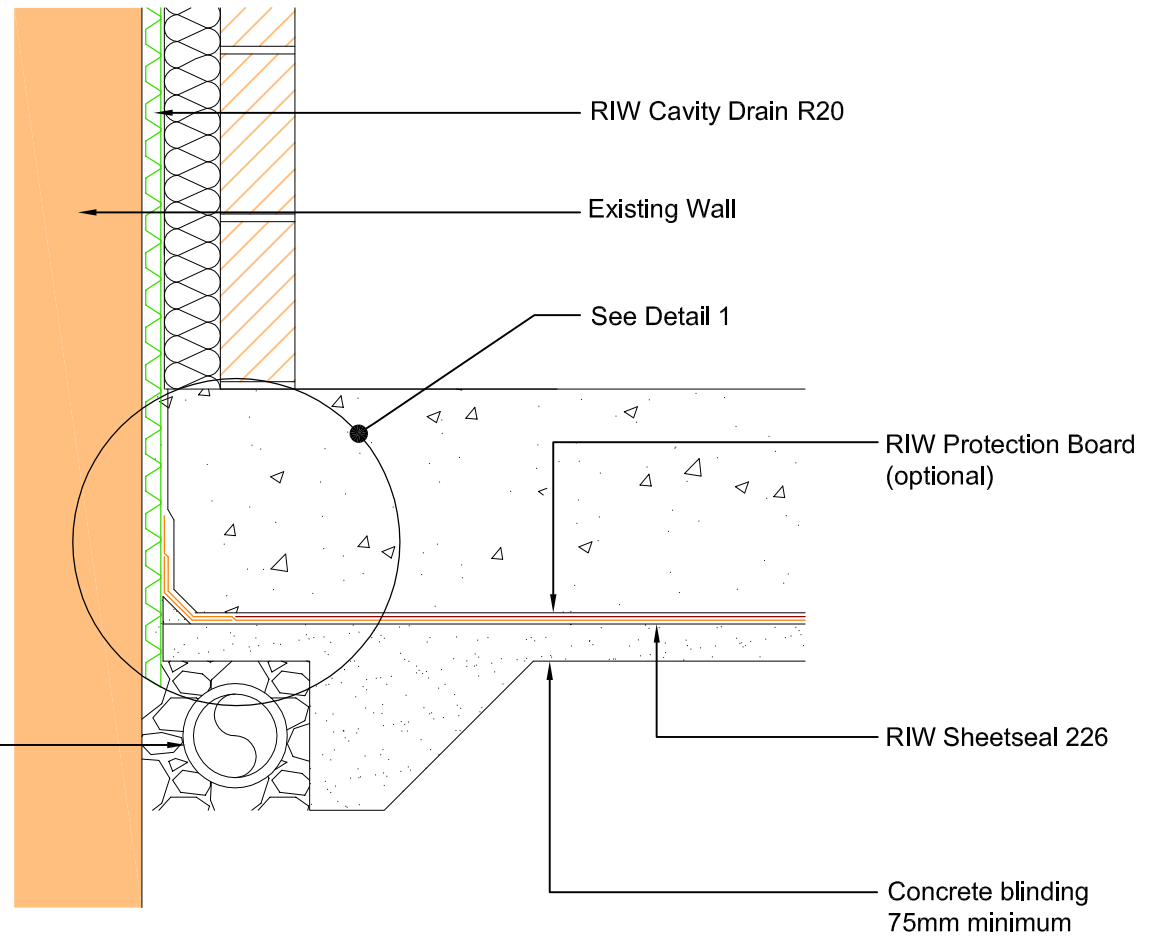


Detail 1



Sub-soil drainage as required

Note:
 Drainage must be 'maintainable', to control the level of water, and be capable of discharging water ingress away from the structure.



**RIW CAVITY DRAIN:
 EXISTING WALL WITH BELOW FLOOR MEMBRANE AND DRAINAGE**

DRAWING NO: TD-CAV-101 A	
DATE: 12.02.13	SCALE: 1:10
DRAWN BY: SJB	CHECKED BY: DK