

General Notes & Guidance:

This drawing must be read in conjunction with the latest RIW Product Literature.

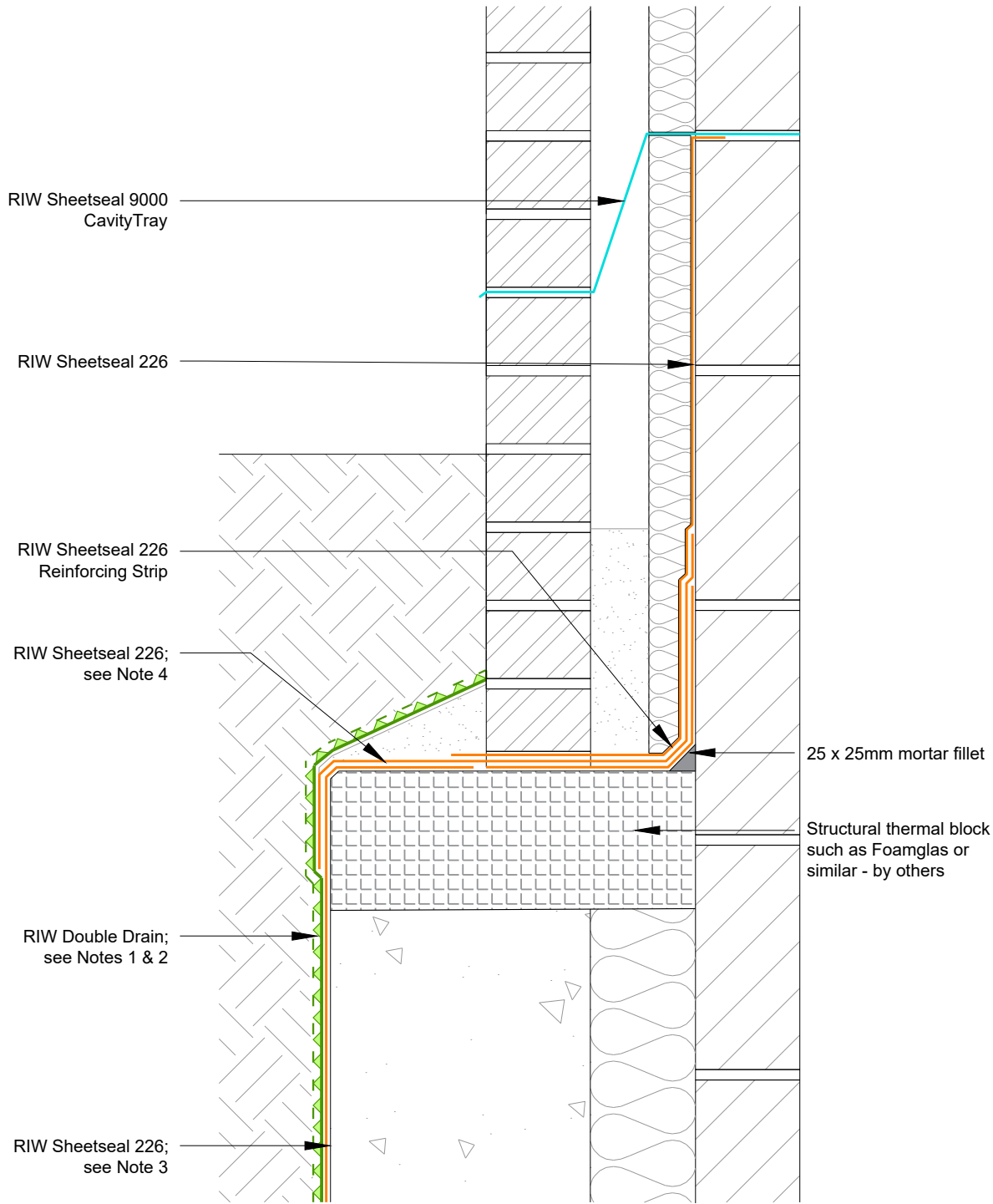
All waterproofing details shown herein must receive approval from the design team or appointed designer before implementation on site, these waterproofing details may have other impacts on the structure and these impacts must be assessed and understood by the design team or appointed designer.

BS8102:2009

6.2.4 The need for continuity in the waterproofing protection should also be considered when selecting a type of protection. In most circumstances, the protection should be continuous.

Drawing Notes:

1. RIW Double Drain relieves hydrostatic pressure build-up, and provides an additional factor of safety.
2. RIW Double Drain is to be installed with the filter fleece facing outwards, towards the soil / ground. REF. BS8102:2009, Item 6.4 Sub-surface drainage
3. RIW Sheetseal 226 must be adequately supported across the 'cavity' during and after construction.



SECTION

LAC® is a registered trademark of RIW Ltd. Flexiseal Pro, FWM, Heviseal, Toughseal, DPM Red, DPM Blue, Sheetseal 226, Structureseal, Cavitydrain R20, Cavitydrain R7, Gas Seal Black, Gas Seal HC, Sheetseal GR, Structureseal GPT, Sheetseal 9000, Cementjoint, Cementfill FC, Cementfill HB, Cementflex and Cementseal are all trademarks of RIW Ltd. Krystol Internal Membrane™ (Kim®), Krystol Waterstop Treatment™, Kyrtonite™ Swelling Waterstop and Krystol Waterstop Grout™, trademarks are the property of Kryton Inc.

This drawing is Copyright 2019 of RIW Ltd. Permission for copying is granted only to employees, authorised representatives, customers, and specifiers to support the sale or use of RIW Ltd products. All other rights are reserved.



RIW LTD

580 / 581 Ipswich Road, Slough, Berkshire, SL1 4EQ, UK
 T: +44 (0) 1753 944200 E: technical@riw.co.uk W: www.riw.co.uk

Project:

Client:

Title:

**EXTERNAL VERTICAL TANKING:
 TYPICAL DETAIL AT TOP OF RETAINING WALL**

Additional Info:

Date: 18/09/19	Scale @ A4: NTS	Drawn: RR	Checked: DK
-------------------	--------------------	--------------	----------------

Project Ref:	Drawing No: RIW/TD/151	Rev:
--------------	---------------------------	------