

Finishes as required

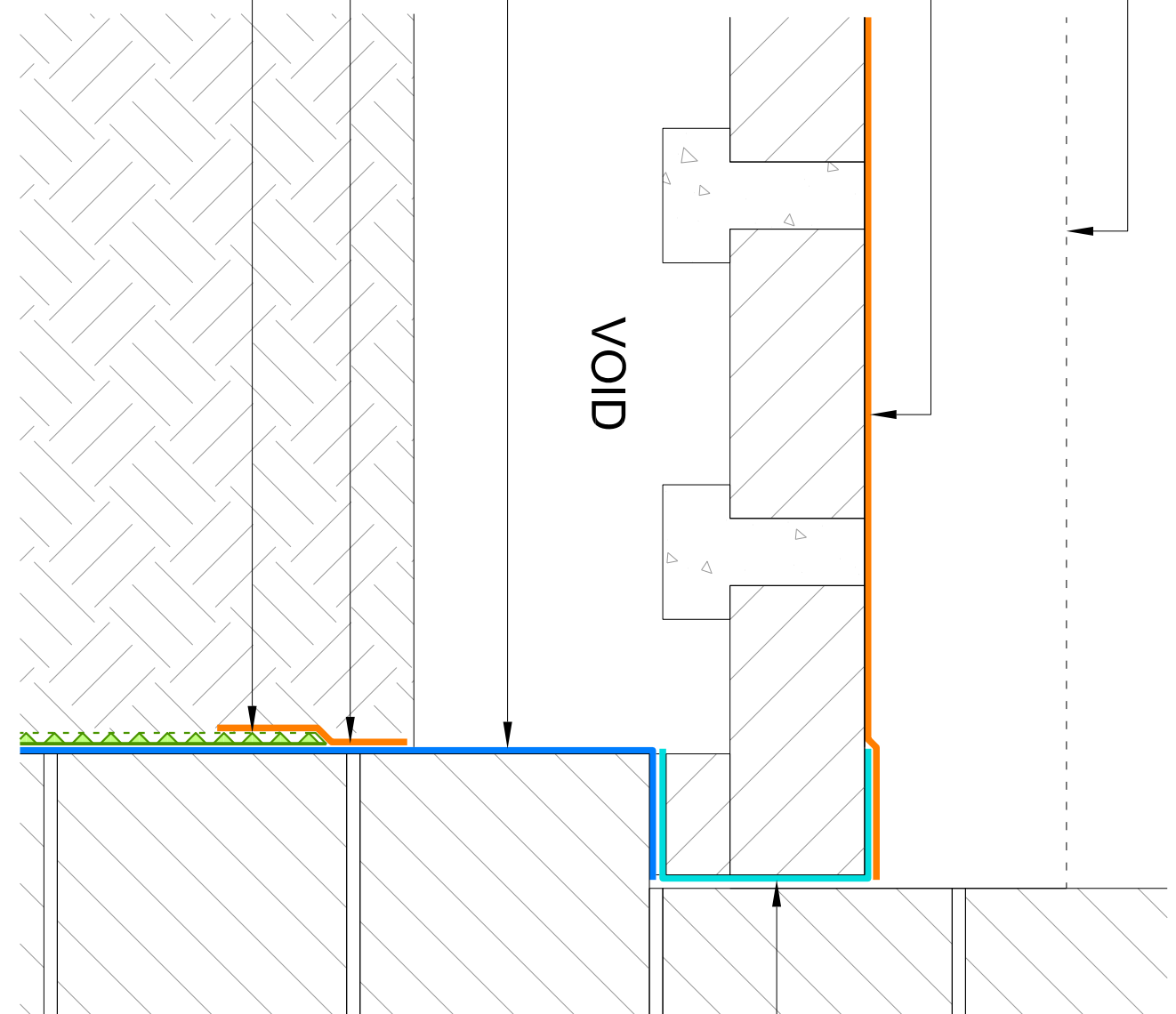
RIW DPM Red:
sealed onto DPC, if necessary,
using RIW Adhesive Tap in lap

VOID

RIW Flexiseal Pro

RIW Sheetseal 226:
to seal top of RIW Double Drain
against vertical membrane

RIW Double Drain:
see notes 1 & 2



- Notes:
1. Double Drain relieves hydrostatic pressure build up, and provides an additional factor of safety. However, if site conditions allow, Protection Board may be used instead.
 2. Double Drain is to be installed with the filler facing outwards towards the soil/ground.

EXTERNAL VERTICAL TANKING:
TYPICAL DETAIL AT TOP OF INTERNAL RETAINING WALL WITH SUSPENDED FLOOR

DRAWING NO: RIW/TD/153
DATE: 16/08/2017
DRAWN BY: RA

SCALE: NTS
CHECKED BY: DK

