

General Notes & Guidance:

This drawing must be read in conjunction with the latest RIW Product Literature.

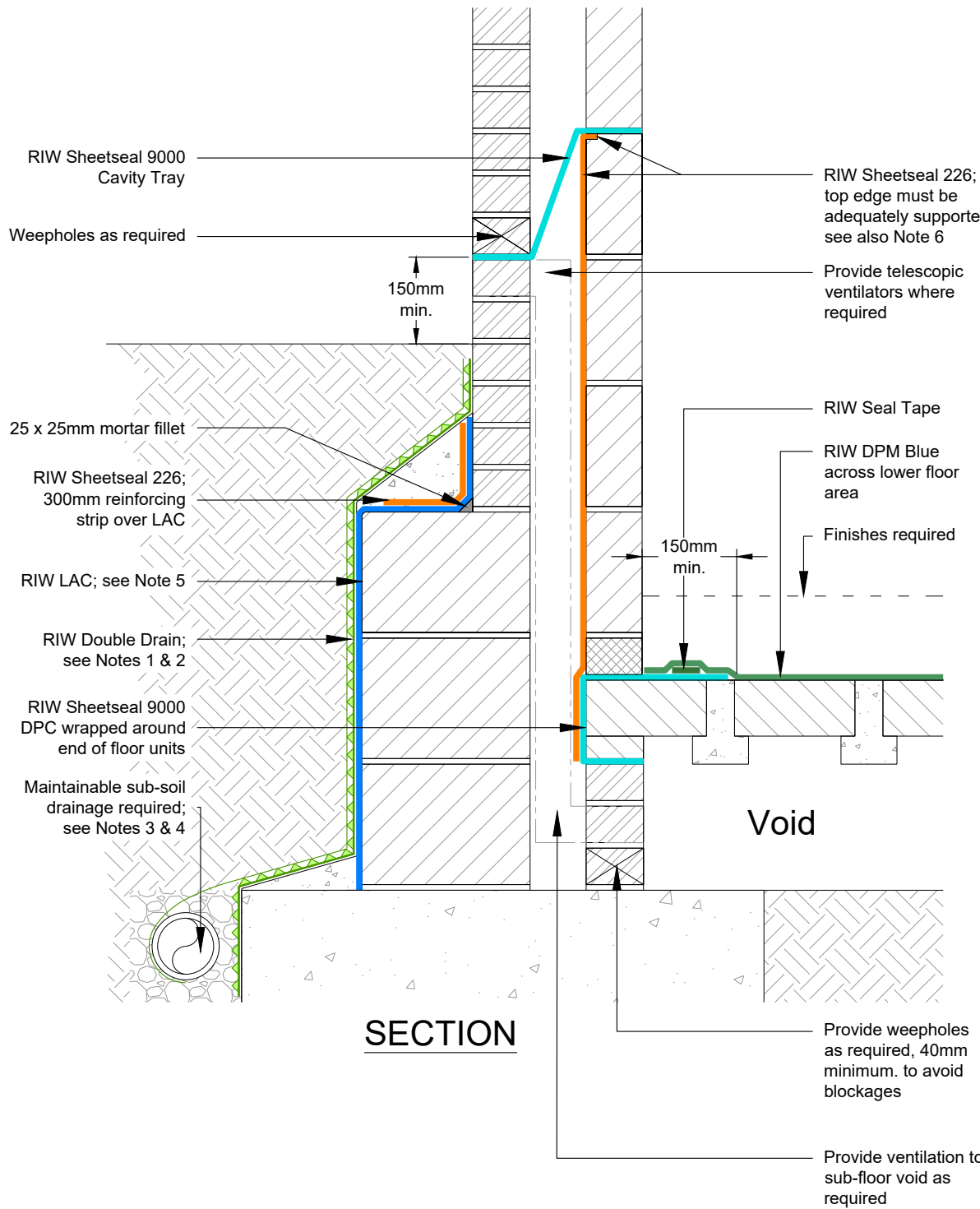
All waterproofing details shown herein must receive approval from the design team or appointed designer before implementation on site, these waterproofing details may have other impacts on the structure and these impacts must be assessed and understood by the design team or appointed designer.

BS8102:2009

6.2.4 The need for continuity in the waterproofing protection should also be considered when selecting a type of protection. In most circumstances, the protection should be continuous.

Drawing Notes:

1. Double Drain relieves hydrostatic pressure build up, and provides an additional factor of safety. REF: BS8102:2009, Item 6.4 Sub-surface drainage.
2. Double Drain is to be installed with the filter fleece facing outwards towards the soil/ground.
3. A maintainable sub-soil drain to be provided at the base of the wall.
4. Sub-soil drainage, when used, must be capable of discharging water away from the structure.
5. RIW LAC is applied to the outside of the wall, when required, to limit water ingress into the cavity.
6. Wall ties must not be allowed to puncture the membrane.
7. This detail is only suitable for shallow basement constructions with a low or variable water table (as defined in BS8102:2009).
8. RIW only details masonry constructions in conjunction with a wall drainage system to help reduce hydrostatic pressure acting on the structure. Drains should be subjected to regular inspections.
9. All suspended Pre-Cast floors are assumed to be in low-risk, free-draining site environments.



RIW Sheetseal 226; top edge must be adequately supported, see also Note 6

Provide telescopic ventilators where required

RIW Seal Tape

RIW DPM Blue across lower floor area

Finishes required

Provide weepholes as required, 40mm minimum, to avoid blockages

Provide ventilation to sub-floor void as required

LAC® is a registered trademark of RIW Ltd. Flexiseal Pro, FWM, Heviseal, Toughseal, DPM Red, DPM Blue, Sheetsseal 226, Structureseal, Cavitydrain R20, Cavitydrain R7, Gas Seal Black, Gas Seal HC, Sheetsseal GR, Structureseal GPT, Sheetsseal 9000, Cementjoint, Cementfill FC, Cementfill HB, Cementflex and Cementseal are all trademarks of RIW Ltd. Krystol Internal Membrane™ (Kim®), Krystol Waterstop Treatment™, Kyronite™ Swelling Waterstop and Krystol Waterstop Grout™, trademarks are the property of Kryton Inc.

This drawing is Copyright 2019 of RIW Ltd. Permission for copying is granted only to employees, authorised representatives, customers, and specifiers to support the sale or use of RIW Ltd products. All other rights are reserved.



RIW LTD
580 / 581 Ipswich Road, Slough, Berkshire, SL1 4EQ, UK
T: +44 (0) 1753 944200 E: technical@riw.co.uk W: www.riw.co.uk

Project:	Additional Info:		
Client:	Date: 19/09/19	Scale @ A4: NTS	Drawn: RA
Title: SUSPENDED FLOOR: HABITABLE SPACE WITH FLOOR LEVEL LESS THAN 600MM BELOW EXTERNAL GROUND LEVEL	Project Ref:	Drawing No: RIW/TD/202	Checked: DK
			Rev: