

General Notes & Guidance:

This drawing must be read in conjunction with the latest RIW Product Literature.

All waterproofing details shown herein must receive approval from the design team or appointed designer before implementation on site, these waterproofing details may have other impacts on the structure and these impacts must be assessed and understood by the design team or appointed designer.

BS8102:2009

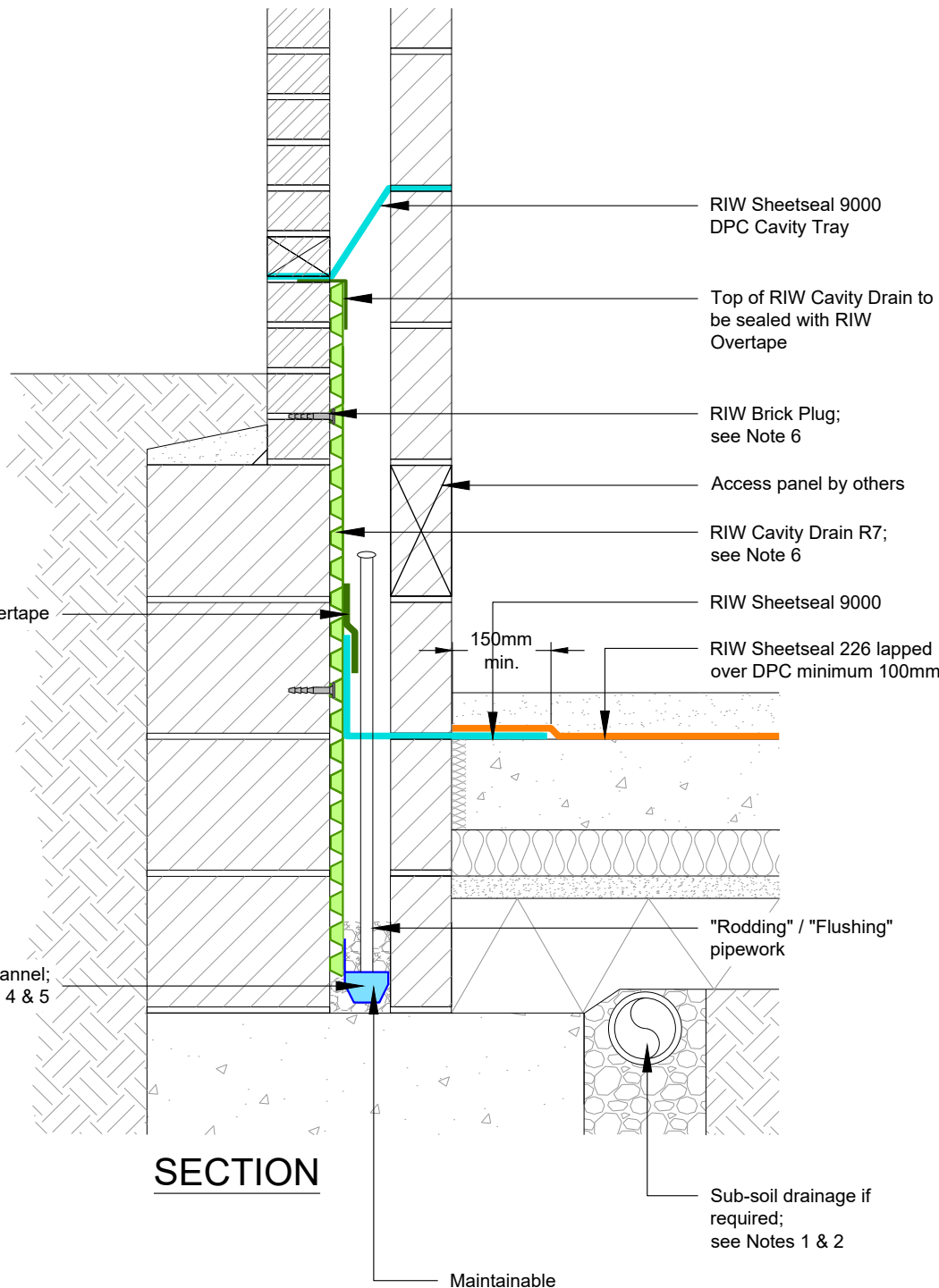
6.2.4 The need for continuity in the waterproofing protection should also be considered when selecting a type of protection. In most circumstances, the protection should be continuous.

Drawing Notes:

1. A maintainable sub-soil drain must be provided at the base of the foundation.
2. Sub-soil drainage should be capable of discharging water away from the structure.
3. RIW Aqua Channel acts as a maintainable drainage channel, and must be installed including:
 - Outlets as required to discharge water ingress. Provide 1 No. for every 50 linear metre run of channel, or 2 No. minimum. Guide only. Engineer to advise.
 - Cleaning ports / Jetting eyes as required for maintenance. Provide at changes in direction, and at 12 metre maximum intervals between.
4. RIW Aqua Channel to be placed below the floor membrane, to allow for the collection of water.
5. RIW Aqua Channel can be bedded in 20mm minimum single sized aggregate, to secure it and promote drainage.
6. RIW Brick Plugs fix the RIW Cavity Drain to the wall, and allow for fixing of screw-in type wall ties, etc.
7. This detail is only suitable for shallow basement constructions with a low or variable water table (as defined in BS8102:2009).
8. RIW only details masonry constructions in conjunction with a wall drainage system to help reduce hydrostatic pressure acting on the structure. Drains should be subjected to regular inspections.

LAC® is a registered trademark of RIW Ltd. Flexiseal Pro, FWM, Heviseal, Toughseal, DPM Red, DPM Blue, Sheetseal 226, Structureseal, Cavitydrain R20, Cavitydrain R7, Gas Seal Black, Gas Seal HC, Sheetseal GR, Structureseal GPT, Sheetseal 9000, Cementjoint, Cementfill FC, Cementfill HB, Cementflex and Cementseal are all trademarks of RIW Ltd. Krystol Internal Membrane™ (Kim®), Krystol Waterstop Treatment™, Kyrtonite™ Swelling Waterstop and Krystol Waterstop Grout™, trademarks are the property of Kryton Inc.

This drawing is Copyright 2019 of RIW Ltd. Permission for copying is granted only to employees, authorised representatives, customers, and specifiers to support the sale or use of RIW Ltd products. All other rights are reserved.



SECTION

RIW Aqua Channel; see Notes 3, 4 & 5

RIW Sheetseal 9000 DPC Cavity Tray

Top of RIW Cavity Drain to be sealed with RIW Overtape

RIW Brick Plug; see Note 6

Access panel by others

RIW Cavity Drain R7; see Note 6

RIW Sheetseal 9000

RIW Sheetseal 226 lapped over DPC minimum 100mm

150mm min.

"Rodding" / "Flushing" pipework

Sub-soil drainage if required; see Notes 1 & 2

Maintainable



RIW LTD

580 / 581 Ipswich Road, Slough, Berkshire, SL1 4EQ, UK
T: +44 (0) 1753 944200 E: technical@riw.co.uk W: www.riw.co.uk

Project:

Client:

Title:

RAISED EXTERNAL GROUND LEVEL: CAVITY WALL WITH GROUND BEARING SLAB
INTERNAL VERTICAL DRAINED PROTECTION. For use in low risk sites

Additional Info:

Date:	Scale @ A4:	Drawn:	Checked:
19/09/19	NTS	RA	DK

Project Ref:	Drawing No:	Rev:
	RIW/TD/255	