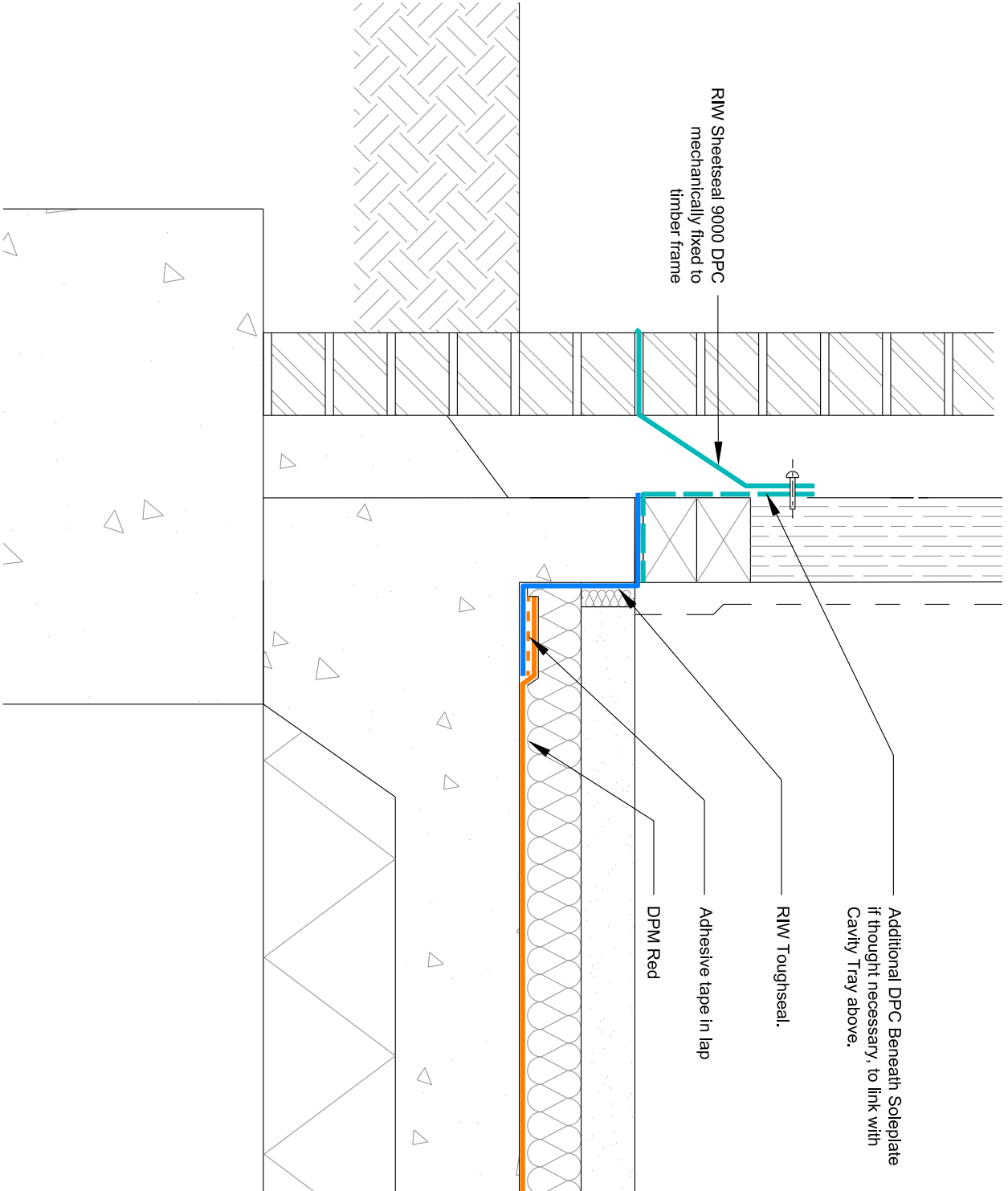


**DAMP PROOFING:
TIMBER FRAME ON SLAB EDGE - 150mm MINIMUM ABOVE EXTERNAL GROUND LEVEL**



RIW Sheetseal 9000 DPC
mechanically fixed to
timber frame

Additional DPC Beneath Soleplate
if thought necessary, to link with
Cavity Tray above.

RIW Toughseal.

Adhesive tape in lap

DPM Red

DRAWING NO.: RIW/TD/303		SCALE: NTS	
DATE:	29/09/2017	CHECKED BY:	DK
DRAWN BY:	RA		