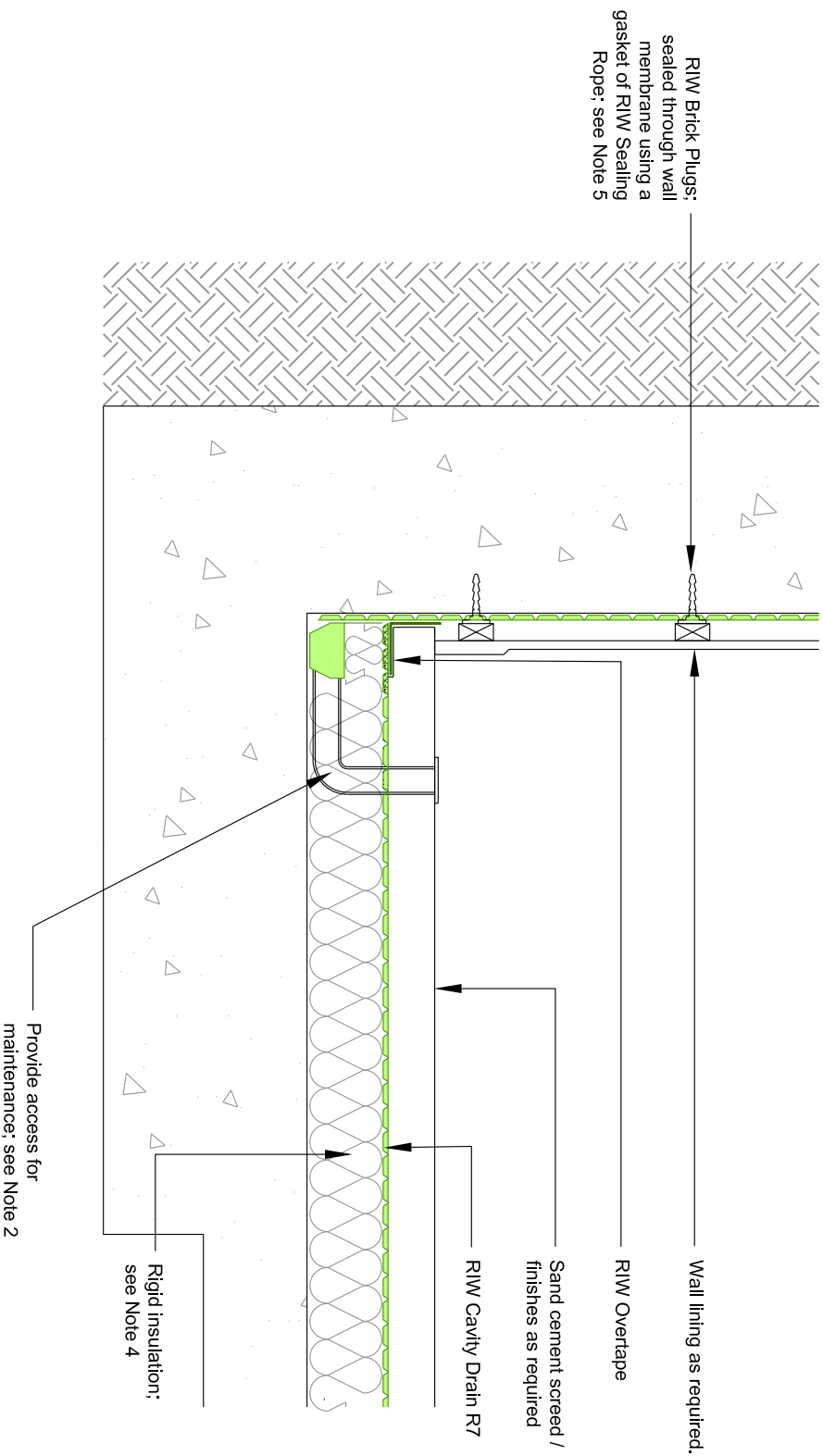


**RIW CAVITY DRAIN: SEALED SYSTEM**  
**RIW AQUA CHANNEL ABOVE SLAB AT BOTTOM OF RETAINING WALL**



- Notes:**
1. Concrete surfaces must be first treated with RIW Cementseal Primer, to reduce the risk of leaching of free lime or mineral salts.
  2. RIW Aqua Channel acts as a maintainable drainage channel, and must be installed including:
    - Outlets as required to discharge water ingress.
    - Provide 1 No. for every 50 linear metre run of channel, or 2 No. minimum.
    - Cleaning ports / Jetting eyes as required for maintenance.
    - Provide at changes in direction, and at 12 metre maximum intervals between.
  3. Ideally, RIW Aqua Channel should be placed in a continuous rebate in the floor slab.
    - Recommended size = 130 x 130mm.
    - RIW Aqua Channel can then be bedded in 20mm minimum single sized aggregate, to secure it and promote drainage.
  4. If insulation boards are used below the floor membrane, then they must be suitable for a wet environment.
  5. RIW Brick Plugs fix the RIW Cavity Drain to the wall, and allow for fixing of following items.

DRAWING NO:	RIW/TD/402	SCALE:	NTS
DATE:	14/08/2017	CHECKED BY:	DK
DRAWN BY:	RA		