

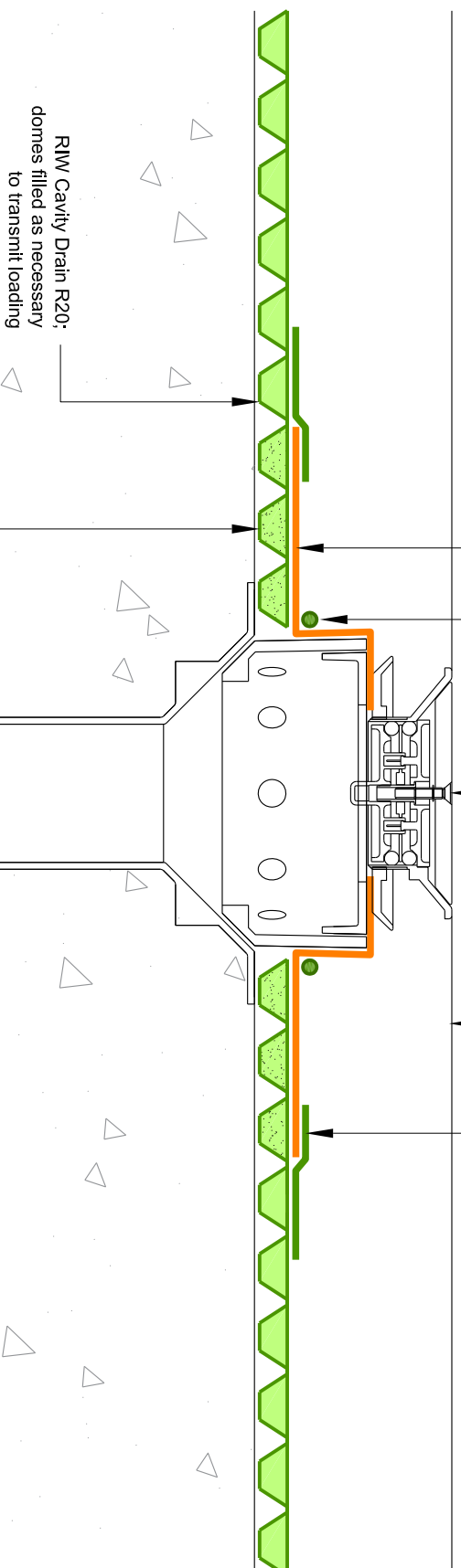
Floor gully with sealed access cover or similar as required

Floor finishes as required

Provide RIW Sealing Rope around gully

RIW Sheetseal 226 sealed to Cavity Drain and gully

RIW Overtape



RIW Cavity Drain R20: domes filled as necessary to transmit loading

Ensure domes beneath RIW Sheetseal 226 are filled as required

Outlet pipe as required

Notes:
1. Please consult Waste Drainage Products, or other similar manufacturers, for details of suitable gully outlets, etc.

RIW CAVITY DRAIN: TYPICAL DETAIL AT FLOOR GULLY

DRAWING NO.: RIW/TD/408
DATE: 22/09/2017
DRAWN BY: RA

SCALE: NTS
CHECKED BY: DK

