

RIW DPM RED

DPM Red is a three-layer, low density polyethylene membrane with a polypropylene reinforcing grid.

BENEFITS

- Manufactured from virgin material, not recycled waste
- High performance damp proof membrane
- Robust jointing and sealing system
- Single wound membrane with zero creases
- Two colour membrane for on-site quality control
- Complies with latest codes of practice as published by CIRIA and BRE

APPLICATIONS

- Ground floor damp proof membrane

APPLIED TO

- Sand blinding
- Suspended floors
- Ground bearing slabs

RIW DPM RED

TYPICAL USES

DPM Red is typically used as a low density, polyethylene damp proof membrane.

The installed product protects the structure against moisture and radon from the ground.

The product is suitable for use above or below ground bearing reinforced concrete slabs, and above suspended beam and block floors or precast concrete slabs.

DURABILITY

Subject to normal conditions of use DPM Red will provide an effective damp proof membrane and vapour/radon barrier during the lifetime of the building.

SPECIFICATION

J40 Flexible sheet waterproofing / damp proofing
Clause 297 Reinforced high performance polyethylene damp proofing.

Please consult RIW for further information.

INDEPENDENT AUTHORITY



RIW Limited
Arc House, Terrace Road South, Binfield,
Bracknell, Berkshire, RG42 4PZ, England
13
0799-CPR-256

EN 13967:2004 & A1: 2006 High performance loose laid gas & damp proofing barrier.

Reaction to fire:	Class E
Watertightness	Conforming
Maximal tensile force MD/CMD	>420/>380
Joint strength MD/CMD	npd
Resistance to tearing:	>320/>330 N
Resistance to static loading:	>20 kg
Determination of resistance to impact:	npd
Durability (artificial ageing)	
- Resistance at elevated temperature:	Conforming
- Resistance to liquid chemicals:	Conforming

PERFORMANCE & COMPOSITION

Form	Loose laid composite sheet
Colour	Red / Black
Overall thickness	2000g / 0.5mm
Roll size	3m wide x 50m long*
Weight	275g/m ² = 41.25 kg / roll
Laps	150mm
Tensile strength MD	500N / 50mm
EN 12311-1 CD	470N / 50mm
Elongation MD	15%
EN12311-1 CD	20%
Nail tear resistance MD	400N
EN 12311 -1 CD	400N
Radon permeability	1.5 x 10 ⁻¹¹

The above performance figures are typical values and should not be considered a product specification.
* Other roll sizes are available.

ANCILLARY PRODUCTS

RIW produce a range of ancillary products for use with DPM Red which include:

Seal Tape - double-sided self-adhesive butyl tape for sealing between overlaps in the membrane.

Lap Tape - single-sided self-adhesive PVC tape for sealing edges of lapped product.

Preformed pipe collars - flexible collar for sealing around pipe penetrations.

Protection Board - 3mm bitumen board, to prevent damage to membrane after installation.

Sheetseal 9000 DPC - a range of high performance polymeric DPCs and cavity trays for building into masonry.

See also our range of below ground waterproofing products for lift pits, basements, etc.

CONSTRUCTION

GENERAL

All construction should conform with the Building Regulations, Codes of Practice and British Standards in current use at the time the building is being constructed.

PREPARATION

The membrane should be laid on a smooth surface, free from voids, hollows and objects which may damage the membrane. If used below a ground bearing slab, the product may be laid on a sand blinding.

APPLICATION

The completed damp proofing system must cover the entire footprint of the building.

DPM Red should be unrolled onto the prepared surface, and be smoothed out as necessary.

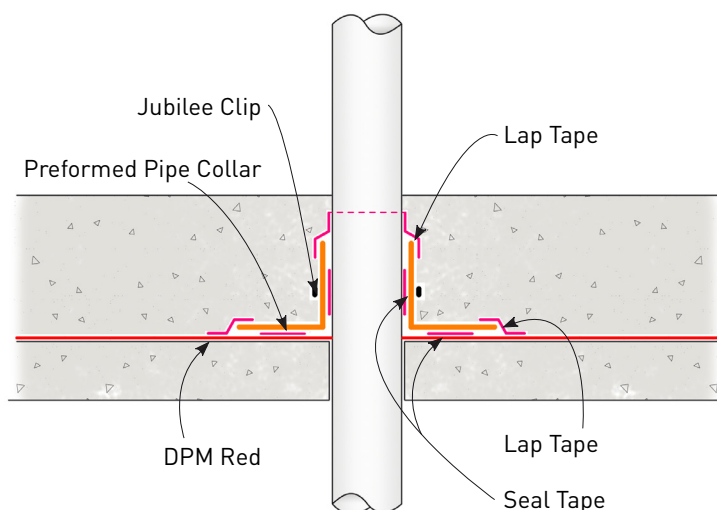
The product must be installed with the red side uppermost.

Subsequent rolls should then be lapped onto the previous roll by 150mm, and be sealed using Seal Tape placed centrally in the lap. Lap Tape should then be laid over the edge of the upper sheet, by 50mm, and be adhered down onto the lower sheet.

Pipe penetrations should be sealed using Preformed Pipe Collars; sealed to the membrane, and pipe using Seal Tape and Lap Tape.

Sheetseal 9000 DPC should be used to provide continuity through the walls, with DPM Red lapped and sealed onto it as required.

Damaged areas should be patch repaired as necessary, using similar lapping/sealing details.



Pipe Penetration Detail

SAFETY

Full health and safety instructions are contained on the product material safety data sheets, and these must be referred to before use.

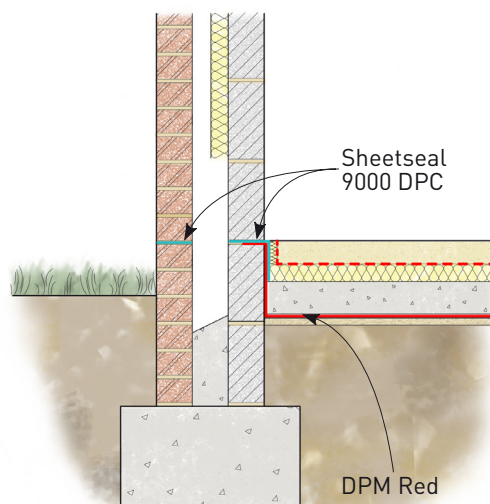
SUPPLY

AVAILABILITY

All RIW products can be obtained through Builders Merchants or approved stockists. A list of approved stockists is available from RIW's offices.

PACKAGING

DPM Red	3m wide x 50m long rolls
Seal Tape	50mm wide x 30m long rolls
Lap Tape	100mm wide x 50m long rolls
Pipe collars	110mm diameter
(supplied with Jubilee clip)	130mm diameter
	160mm diameter



Typical Ground Bearing Slab

STORAGE

The rolls must be stacked on a flat surface, kept under cover and protected from sunlight and mechanical damage.

TECHNICAL SERVICES

The RIW Technical Department is available to advise on individual projects and to prepare or assist in the preparation of specifications and drawings. A list of experienced applicators of RIW materials is available from RIW's offices.

The information in this literature was correct at the time of going to press. However, we are committed to continually improving our products and reserve the right to change product specifications.

For the latest information, please consult RIW. Conditions of use are beyond our control, therefore we cannot warrant the results to be obtained.

RIW

Arc House, Terrace Road South, Binfield,
Bracknell, Berkshire, RG42 4PZ

Technical enquires tel: **01344 397777**

Commercial enquires tel: **01344 397788**

www.riw.co.uk

REMEMBER IT'S
waterproof RIW