



CB/CM

Vn1

June 2020

# RIW FLEXISEAL 500 HG

Hand Applied Liquid Deck Waterproofing Membrane.

FLEXISEAL 500 HG is a two-component, reactive, fast-curing, hand-applied waterproofing membrane which provides a continuous, tough and flexible seamless coating for roofs, podium decks, terraces and balconies. FLEXISEAL 500 HG is based on advanced resin technology.

## BENEFITS

- | Water and water vapour barrier
- | Seamless & fully bonded coating
- | Rapid cure and unaffected by high humidity
- | Tough & flexible, able to accommodate differential movement
- | Can be applied in one or two coats
- | Cold applied by hand – no hot works
- | Simplifies application to irregular profiles & complex details
- | Provides access to restricted areas
- | High substrate and inter-coat adhesion
- | Excellent crack bridging capability
- | Good chemical & UV resistance

## APPLICATIONS

Unexposed applications on:

- | Podium decks
- | Elevated decks (terraces & balconies)
- | Roofs – including Green and Bio-Diverse roofs

## APPLIED TO

- | Concrete
- | Masonry
- | Steel

REMEMBER IT'S  
**waterproof** RIW

# RIW FLEXISEAL 500 HG

## PRODUCT USES

RIW Flexiseal 500 is ideal for application to all podiums, buried roofs, terraces or balconies. Can be applied at a high output to any sized application. In particular, convenient for smaller areas with restricted access.

## PRODUCT FEATURES

- Unaffected by high humidity
- Rapid cure even at low temperatures
- Able to carry load or traffic after one hour
- Long and effective life
- Resistant to chloride ions
- Excellent chemical, abrasion and impact resistance
- Excellent UV and weather resistance
- Crack bridging capability
- High bond strength to substrate
- Excellent intercoat adhesion
- No critical overcoating time on any coat
- Applied only by authorised and trained contractors

## TECHNICAL DATA

RIW FLEXISEAL 500 HG can be applied at temperatures between 0°C and 30°C.

PRODUCT	VALUE
FLEXISEAL 500 Winter Grade	0°C - 15°C
FLEXISEAL 500 Summer Grade	10°C - 30°C

## SURFACE PREPARATION

All surface coating systems are dependent on the quality of surface preparation.

**Concrete:** New concrete substrates should be a minimum of seven days old and constructed in accordance with BS EN 1992. The substrate must be clean, dry and structurally sound. It must be free from laitance, oils and all other surface contaminants.

Where the use of a non-structural screed or a lightweight concrete substrate is proposed, contact Technical Department as these materials often have low cohesive strength or retain water in open pores.

**Steel:** On steel surfaces all rust, dirt and contamination should be removed to expose bright metal to achieve a surface finish to comply with Swedish standard Sa 2.5.

For compatibility with other construction materials or where additives, cement replacement or curing compounds have been used please consult the Technical Services Department.

## APPLICATION

### Primer

The substrate must be primed with FLEXISEAL 500 CONCRETE PRIMER prior to application of the FLEXISEAL 500 HG membrane with a brush or roller.

### Membrane

RIW FLEXISEAL 500 HG system is poured onto the substrate and spread using a trowel, brush and/or notched squeegee or skid-leveller. For vertical surfaces the material should be applied by brush or trowel. The material should be applied in either a single 2.0mm layer or as a two coat system with each layer 1.0mm in thickness.

FLEXISEAL 500 HG can be trafficked or loaded once fully cured.

Typical application methods include trowel or brush although other methods such as notched squeegee or skid-leveller are acceptable depending upon Contractor preference and substrate regularity.

### Coverage

Coverage rates are based on a smooth substrate and will vary with surface texture and porosity.

Primer: 0.2kg/m<sup>2</sup> and 0.3kg/m<sup>2</sup>

Membrane: typically 1.4kg/m<sup>2</sup>/coat or 2.8kg/m<sup>2</sup> for single coat application

### Cleaning

All tools and equipment should be cleaned with acetone before the material is allowed to cure.

## ANCILLARY PRODUCTS

RIW has a range of products to compliment the FLEXISEAL 500 HG system. These include:

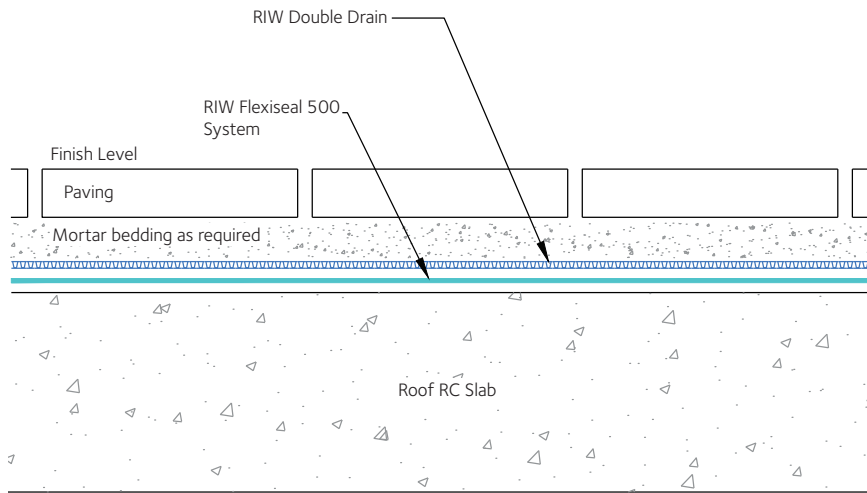
**FLEXISEAL 500 Concrete Primer** – A two-component, reactive, fast-curing primer consisting of a resin base and a powder initiator.

**FLEXISEAL 500 Metal Primer** – A single-component, air-drying primer with anti-corrosion pigments.

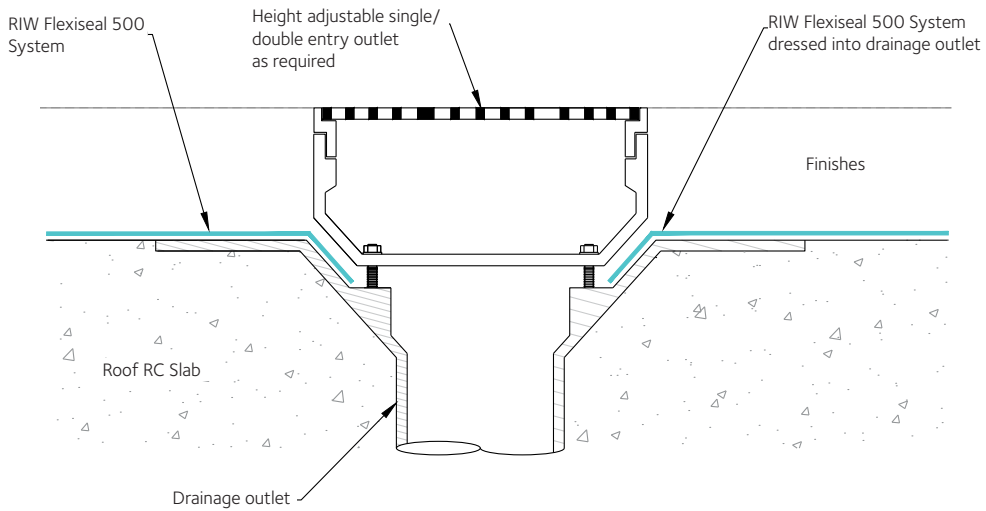
**FLEXISEAL 500 Flex Sealant** – A two-component, reactive, fast curing flexible sealant consisting of resin and powder initiator, used for sealing of cracks and gaps where low level movement can be expected.

**FLEXISEAL 500 Smoothing Compound** – A three-component, reactive, fast curing, high strength repair compound, consisting of base resin, specially blended fillers and powder initiator, designed for small scale repairs to damaged concrete or levelling rough concrete prior to the installation of the FLEXISEAL 500 membrane.

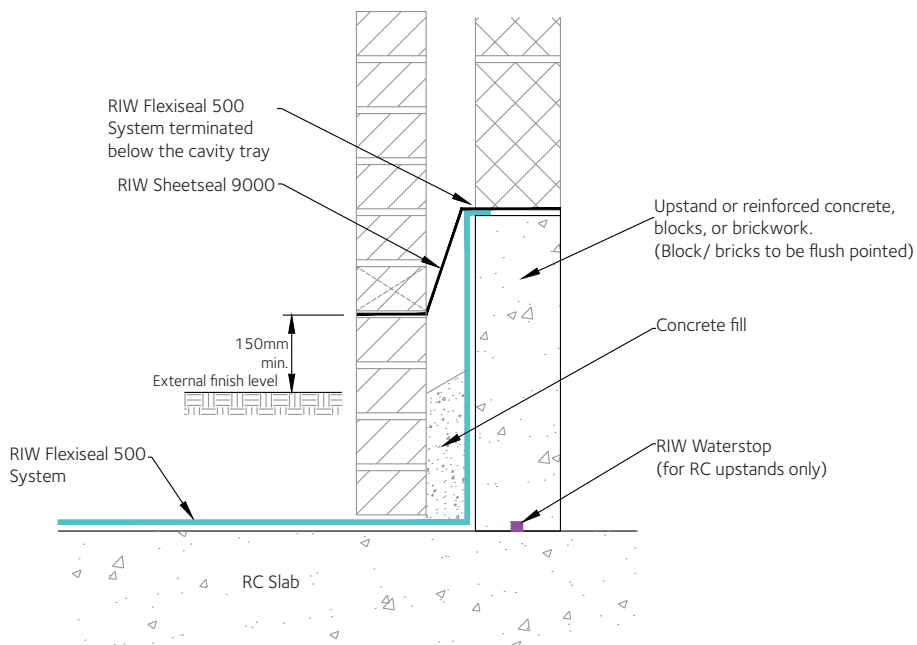
**FLEXISEAL 500 Adhesive** – A two-component, reactive, fast-curing adhesive for bonding onto PVC plastics. Comprises a thixotropic base resin and powder initiator.



**Detail 1 - Typical Deck With Finishes**



**Detail 2 - Single / Double Entry Outlet**



**Detail 3 - Termination to Inner Leaf of Wall Cavity**

## PACKAGING & STORAGE

	KIT SIZE	GRADE	RESIN	FILLER	INITIATOR
FLEXISEAL 500 HG Membrane (W) or (S)	20 Kg	Winter/ Summer	20 Kg		Liquid 5 Kg (bulk)
FLEXISEAL 500 Liquid Initiator <i>(For use with FLEXISEAL 500 HG Membrane)</i> <i>Quantity varies with Temperature</i>	5 Kg				Liquid 5 Kg
FLEXISEAL 500 Concrete Primer	5 Kg	Standard	5 Kg		
FLEXISEAL 500 Powder Initiator <i>(For use with FLEXISEAL 500 HG Concrete Primer)</i> <i>No. of bags to add varies with Temperature</i>	100 g	-			Powder 100g
FLEXISEAL 500 Metal Primer	5 Kg	-	5 Kg		-
FLEXISEAL 500 Flex Sealant	5 Kg	-	4.85 Kg		Powder 150g
FLEXISEAL 500 Adhesive	5 Kg	-	4.85 Kg		Powder 150g
FLEXISEAL 500 Smoothing Compound (H) <i>(Consists of Resin, FLEXISEAL 500 B2 Filler &amp; Powder Initiator)</i>	23.3 Kg 23.36 Kg	Summer Winter	3.20 Kg 3.20 Kg	20 Kg 20 Kg	Powder 100g Powder 160g

All components of the FLEXISEAL 500 system should be stored in cool, dry, protected conditions, out of direct sunlight and in accordance with the relevant site Health & Safety regulations. Storage temperature must not exceed 25°C. Do not store near naked flames or foodstuffs.

Stored in unopened containers, under the correct conditions, the components have a minimum shelf life of twelve months. If your product is more than twelve months old you must contact Technical Service before use.

Please refer to FLEXISEAL 500 HG Method Statement for detailed application instructions.

## HEALTH & SAFETY

Please refer to our safety datasheets and information sheets for further information.

The information in this literature was correct at the time of going to press. However, we are committed to continually improving our products and reserve the right to change product specifications. For the latest information, please consult RIW. Conditions of use are beyond our control, therefore we cannot warrant the results to be obtained.

### RIW Limited

580-581 Ipswich Road, Slough, SL1 4EQ

Technical enquires tel: **01753 944200**

Commercial enquires tel: **01753 944210**

**www.riw.co.uk**

REMEMBER IT'S  
**waterproof** RIW