

RIW HEVISEAL

Heviseal is a cold applied heavy bodied damp proof membrane, which is U.V. resistant and dries to a uniform black finish. The coating is a fibre and mineral filled solution of natural and petroleum bitumens in white spirit.

BENEFITS

- l Water and water vapour barrier
- l U.V. resistant
- l Easily applied and adapted to difficult details
- l Cannot be leached or washed away
- l Undamaged by frost after application
- l Easily maintained

APPLICATIONS

- l Basement and Sub-structures
- l Superstructures
- l Flat roof areas
- l Gutters
- l Parapet walls/plinths
- l Water storage tanks/ponds
- l Planters

APPLIED TO

- l Concrete
- l Masonry
- l Steel

RIW HEVISEAL

TYPICAL USES

Heviseal is typically used to provide a protective coating to concrete or steel superstructures or other structures such as retaining walls, plinths etc., when the membrane is to be left exposed for a long period of time prior to cladding. Heviseal is suitable as a waterproof membrane, for periodic maintenance onto existing flat roof areas. The membrane can also be used on parapet walls, gutters, planters, ponds and water storage tanks. Heviseal should not be used in contact with potable water systems.

DURABILITY

Subject to normal conditions of use Heviseal will provide an effective barrier to the transmission of water and water vapour for a minimum of five years when used in an exposed situation, and for the life of the structure once covered.

SPECIFICATION

J30 – Liquid Applied Tanking/Damp Proofing in accordance with NBS clauses.

Please consult RIW for further information.

ANCILLARY PRODUCTS

RIW produce a range of ancillary products for use with Heviseal which include:

Cementfill FC - Cement based waterproof fairing coat and repair mortar for filling minor holes, voids and defects.

Cementfill HB - Cement based waterproof high build repair mortar for profiling and providing fillets.

Sheetseal 9000 DPC - a range of high performance polymeric dpc's, and pre-formed cavity trays, compatible for use with all RIW membranes.

PERFORMANCE & COMPOSITION

Form	Fibre and mineral filled bitumen solution
Colour	Black
Specific Gravity	0.95g/ml
Solids content	70% (w/w)
Flash point	39°C
Water vapour resistance	590 MN s/g
Water vapour permeability	0.43g/m ² per 24 hours
Coverage*	1.5 m ² per litre/coat
Number of coats	Two
DFT of coating	1mm for two coats
Curing time	Touch dry: 24 hours
Overcoating time	Minimum: when touch dry
Elongation	100%
Preparation of liquid	Requires stirring to ensure even distribution of fibres
Sulphate resistance	50,000 ppm
U.V. resistance	Good, minimum 5-7 years
Shelf life (Temperate climate)	12 months

The above performance figures are typical values and should not be considered a product specification.
*Figures quoted are theoretical coverage rates. Actual coverage may vary depending on nature of substrate.

CONSTRUCTION

GENERAL

All construction should conform to the Building Regulations, Codes of Practice and British Standards in current use at the time the building is being constructed. In particular, it is recommended that reference is made to BS 8102:2009.

PREPARATION

All surfaces: Should be smooth, clean, dry (to a depth of 1 - 2mm), sound and free from frost, oil, grease, condensation and other contamination. Any voids or hollows must be made good to a flush finish with a suitable filler. Any sharp edges or high points should be eliminated. Powdery or flaking surfaces should be removed by suitable means.

Internal corners should be eased with a cement fillet (see ancillary products), approximately 20mm high to assist application, similarly, external corners should be chamfered or rounded where required.

Concrete surfaces: Horizontal surfaces should preferably be smooth, however lightly tamped (3–4 mm peak to trough profile), brushed or floated surfaces may also be acceptable.

Masonry: Should be sound with joints flush pointed or 'bagged out' with Cementfill or similar before the membrane is applied. Open textured surfaces should be sealed with Cementfill FC or a sand/cement slurry to provide a suitable surface. If existing surfaces are very rough, they may require rendering.

Metal surfaces: Should be wire brushed or sand blasted and pre-treated with a steel primer, prior to the application of the membrane. Corroded metal should also be treated with an anti-corrosive primer. Heviseal is compatible with all commonly encountered steel primers, including alkyd, chlorinated rubber and epoxy based materials.

APPLICATION

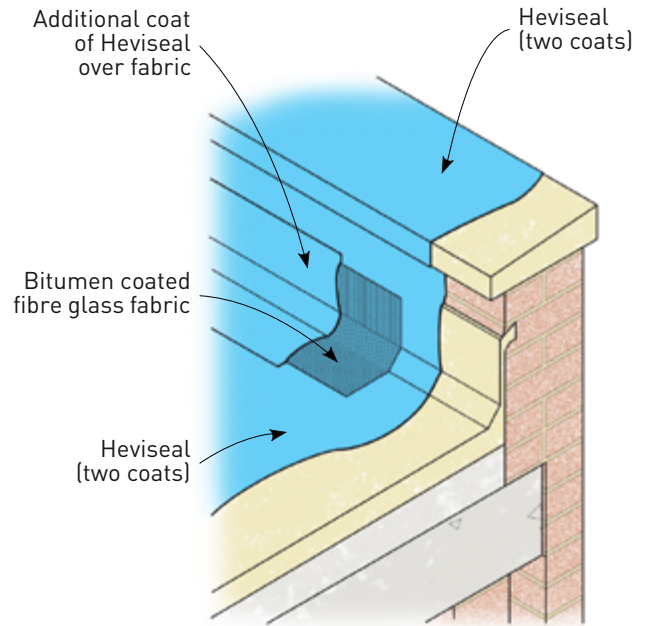
General: Application of Heviseal should not be attempted in temperatures below 5°C. Heviseal should be applied as supplied, however under certain circumstances, such as cold weather conditions, it may be necessary to add up to 10% white spirit to ease application. Heviseal should be applied in two coats at a minimum application rate of 1.5m²/litre per coat. Under no circumstances should the liquid be heated or sanded.

Manual: Heviseal can be applied using a stiff brush or medium pile roller. The membrane should be transferred into a suitable container and applied to the substrate by brushing vigorously in all directions to ensure uniform coverage. Do not pour the material onto the substrate or allow it to pool in serrations or depressions. Good ventilation is necessary to obtain a proper cure. Heviseal will require 24 hours minimum before recoating.

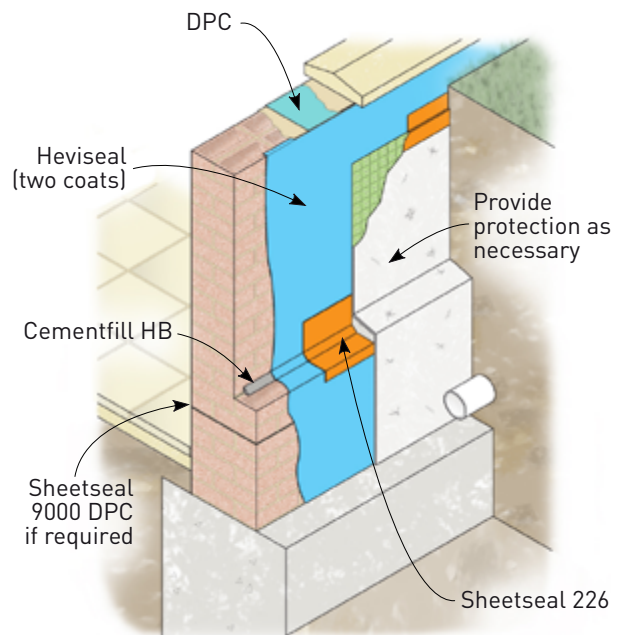
SPECIFIC USES

Flat roof, new/refurbishment (see Detail 1): Heviseal can be applied to a new or existing roof to provide a temporary waterproof membrane, or extend the life expectancy of the existing membrane, i.e. mastic asphalt or roofing felt. All cracks or depressions in the asphalt must be made good, and open laps in roofing felt should be taped with a bitumen-impregnated tape, prior to applying Heviseal. Solar reflective coatings can be applied directly over the Heviseal to provide additional protection and an aesthetically pleasing finish. This will also prolong the life expectancy of the roof by reducing thermal movement and protecting it against industrial contamination and environmental pollution.

Planters (see Detail 2): Heviseal can be applied to new or existing retaining walls to prevent moisture egress. The membrane should be protected from backfilling



Detail 1 - Roof Refurbishment

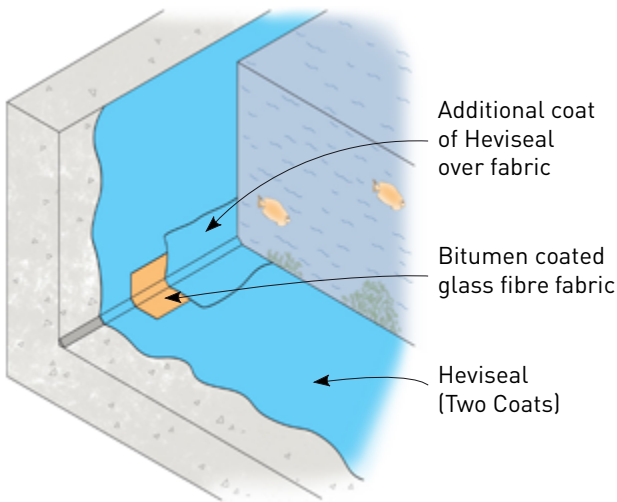


Detail 2 - Planter/Retaining Wall

using Protection Board or Double Drain to suit.

Pond lining: Heviseal is suitable for use as a pond lining and will not harm pond life. The membrane will require three coats at all internal angles which should incorporate 0.13mm thick bitumen coated glassfibre fabric between the second and third coat for reinforcement. When the Heviseal has cured throughout its thickness the membrane must be washed down (2-3 times) with water to remove all remaining traces of solvents.

Gutter repairs: Heviseal can be applied to existing gutters constructed of galvanised steel, pre-cast concrete units, etc. All defects must be made good and then the junctions between each section should be sealed. New galvanised steel gutters will require degreasing prior to applying the Heviseal. Where movement is expected between the sections, reinforce as for Pond lining above.



Pond Detail

SAFETY

Heviseal is flammable and should be used in well-ventilated areas away from sources of ignition. The product can effect sensitive skins. Gloves or barrier cream should always be used by operatives and hands thoroughly washed at the end of each working period. Do not allow the product to enter watercourses. Full health and safety instructions are contained on the product material safety data sheets, and these must be referred to before use.

SUPPLY

AVAILABILITY

All products can be obtained through Builders Merchants or approved stockists. A list of approved stockists is available from RIW's offices.

PACKAGING

20 litre containers

STORAGE

Keep container tightly closed. Keep in cool, dry, well ventilated area. Store in correctly labelled containers. Prolonged storage (in excess of 12 months) may result in some loss of solvents, causing an increase in viscosity. The material may be stored in severe winter environments without any detrimental effects.

TECHNICAL SERVICES

The RIW Technical Department is available to advise on individual projects and to prepare or assist in the preparation of specifications and drawings. A list of experienced applicators of our materials is available from RIW's offices.

The information in this literature was correct at the time of going to press. However, we are committed to continually improving our products and reserve the right to change product specifications.

For the latest information, please consult RIW. Conditions of use are beyond our control, therefore we cannot warrant the results to be obtained.

RIW

Arc House, Terrace Road South, Binfield,
Bracknell, Berkshire, RG42 4PZ

Technical enquires tel: **01344 397777**

Commercial enquires tel: **01344 397788**

www.riw.co.uk

REMEMBER IT'S
waterproof RIW